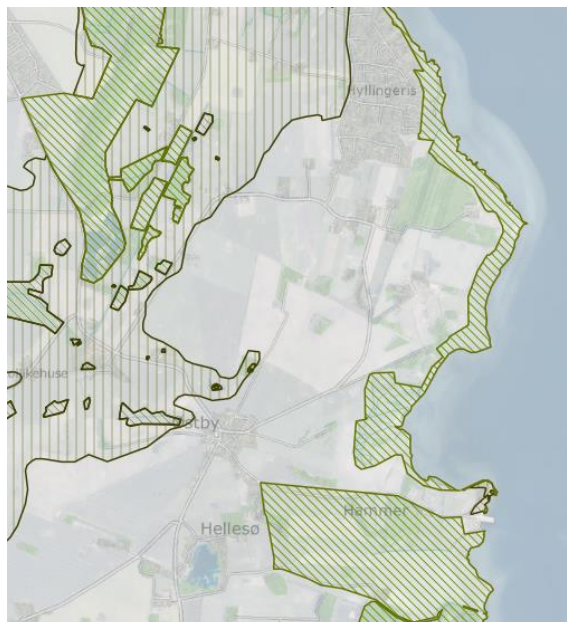


BILAG TIL HØRINGSSVAR



Marker 2019 (Kilde: Internet Markkort)



Samme landskabsudsnit med udpegningerne fra Grønt Danmarkskort

Overlapsanalyser

Mark 12-0



OV 1 – 0,72 ha



OV 2 – 2,49 ha



(Mark 12-0, fortsat)

OV 3 – 0,58 ha

Mark 27-0



0,72 ha

Mark 21-0

(inkl. 0,04 ha en mindre del af mark 21-1)



0,63 ha

0,04 ha mark 21-1

Mark 22-0

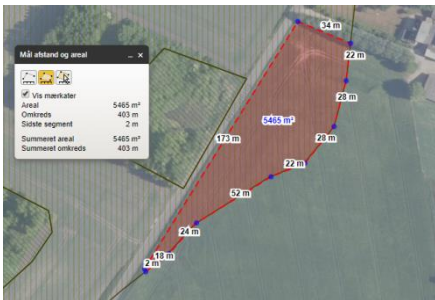
(inkl. 0,07 ha af mark 21-1)



0,24 ha

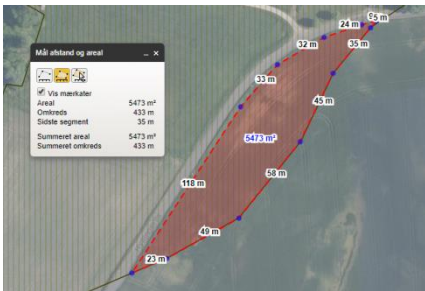
0,07 ha – mark 21-1

Mark 33-0



0,55 ha

Mark 1-0



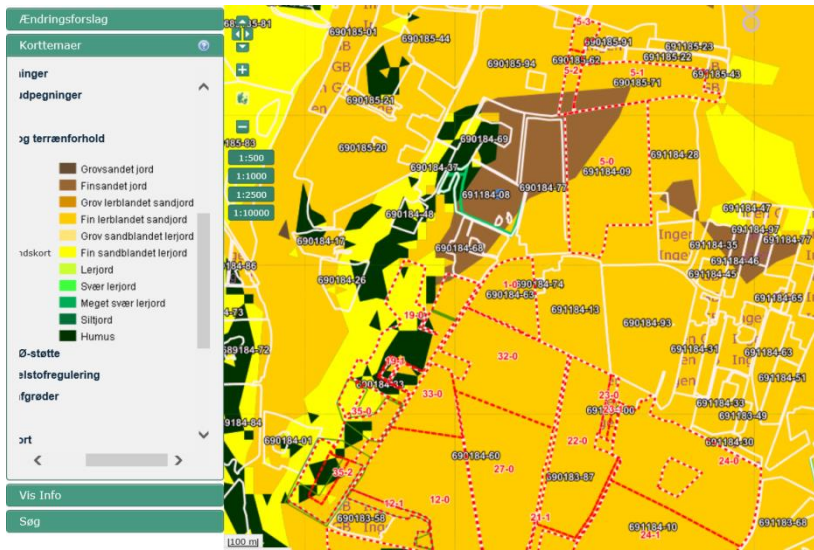
0,55 ha

Mark 5-0

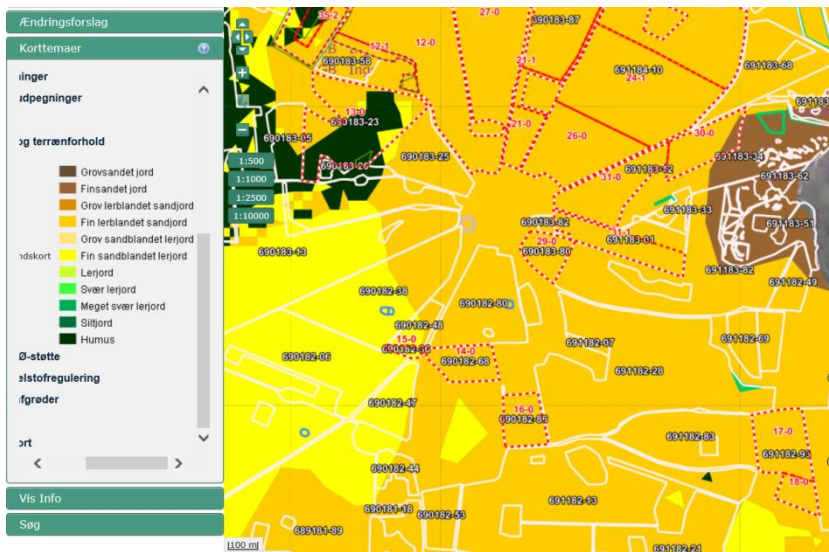


4,46 ha

Jordbundsforhold



Markerne mod nord



Markerne mod syd

Oversigt over marker, der overlapper helt eller delvist med udpegningerne

Marker	Overlapsarealer, ha				
	Mark-nr.	Potentiel natur	Potentiel øko (hele marker)	logisk forbindelse (delvist overlap)	
1-0			0,55		
5-0			4,46		
5-1			5,55		
5-2			1,00		
5-3			0,71		
12-0			0,72	2,49	0,58
12-1			1,00		
13-0			8,41		
14-0					
15-0					
16-0					
17-0	3,75				
18-0	1,26				
19-0			7,39		
19-1			0,22		
21-0			0,63		
21-1			0,11		
22-0			0,24		
23-0					
23-1					
24-0					
24-1					
26-0					
27-0			0,72		
29-0					
30-0					
31-0					
31-1					
32-0					
33-0			0,55		
35-0			2,68		
35-1			1,01		
35-2			2,52		
Antal: 33	5,01	41,54			